

PORTFOLIO

matej zahatňanský



december 2014

RECENT PROJECTS

Reconstruction of Archive and Research Center for the Music of the Twentieth and Twenty-First Centuries. The main purpose of the Paul Sacher Foundation resides in the optimum care and study of its source materials. The Foundation also facilitates and supports scholarly research into its archival holdings by granting access to the documents available on its premises. All the technical and organizational prerequisites necessary to fulfill this purpose have been taken care of. Project included new LED-enlightened tunnel connecting two existing buildings and new archive room for public purposes.

Paul Sacher Foundation
reconstruction 2011-2012
F.A.B. Forschungs und Architekturbüro
visualizations, model making, planning



new archive



LED-enlightened tunnel



east view



Single family house HELIX is designed with on-site delivered prefabricated wooden panels. Reacting to the beautiful views folds around the core covered with plywood.

HELIX family house
project 2012-2014
F.A.B. Forschungs und Architekturbüro
planning and visualizations

visualization - east view



004

HELIX

FÜLLINSDORF / CH

003

RECENT PROJECTS

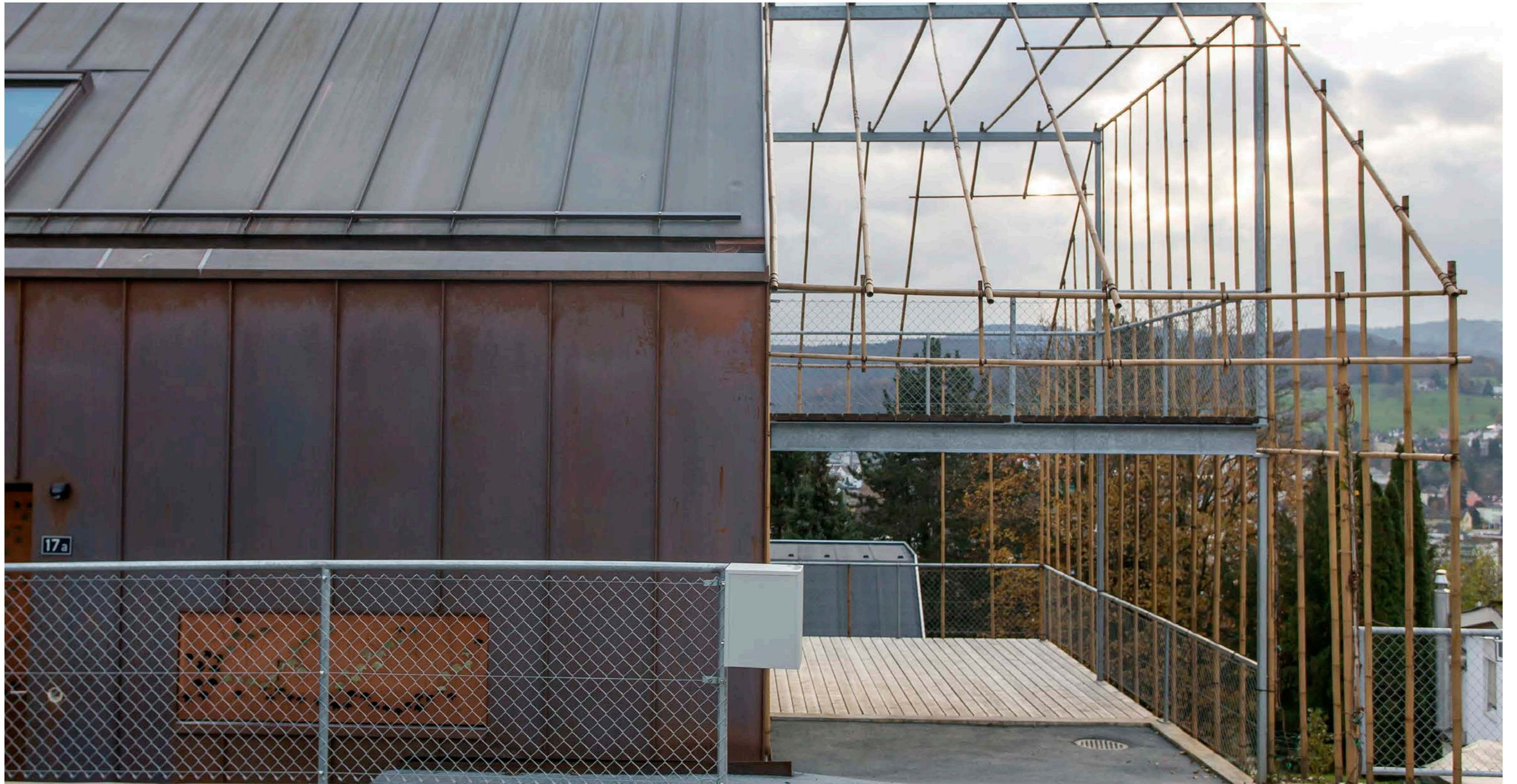


view west



Invited competition for redevelopment of former railway areal in Basel /CH. Winning proposal consists of 183 apartments situated in two blocks following existing regulation.

NT Areal
invited competition 2013, 1. prize
F.A.B. Forschungs und Architekturbüro
planning and visualizations



view from garden

view from street

[InsideOutside house](#)
 project 2012-2014
 F.A.B. Forschungs und Architekturbüro
 planning, visualizations

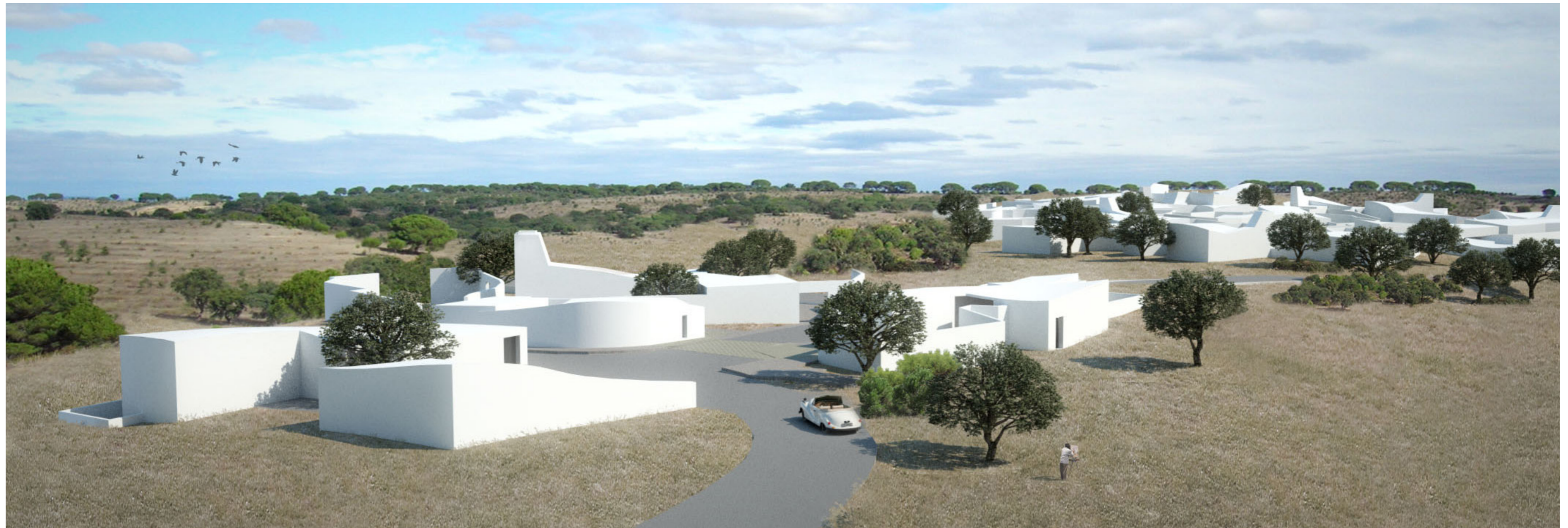
Eco-resort Herdade da Boavista consist of 160 housing and recreational units. The concept holds two premisses in the urban layout and architecture typologies. To reduce carbon emission, enhance energy efficiency and simultaneously to value the cultural interest existing in the local traditional dwellings

Eco-resort Herdade da Boavista
study 2010
Ressano Garcia Arquitectos
visualizations, model making, palnning



public, semi-private and private areas

visualization of service area



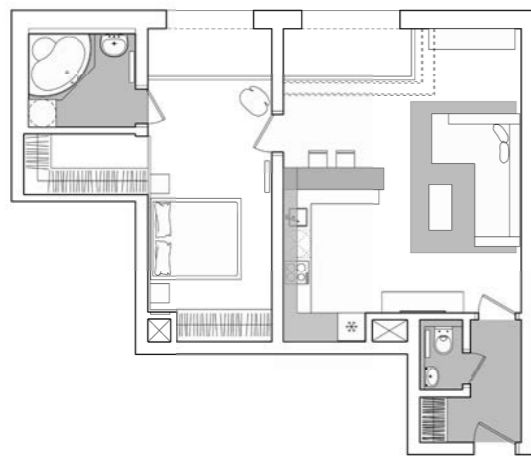
REALIZATIONS

Interior of small apartment seeks for luxury and comfort for single businessman. Kitchen island includes vine and cocktail bar made of MDF wood. Different light scenarios enable several variations of atmosphere.

Apartment Nové Pitkovice
interior 2010
A.M.Bohuniczky, M.Zahatňanský
design, palnning, realization



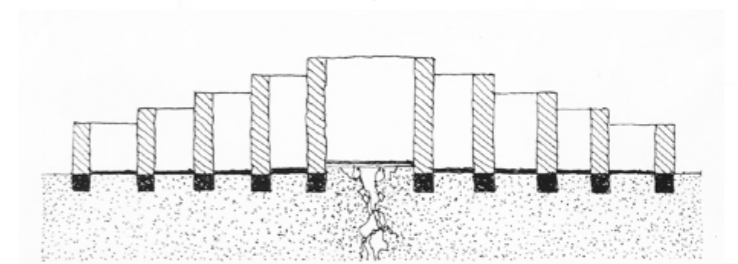
kitchen island



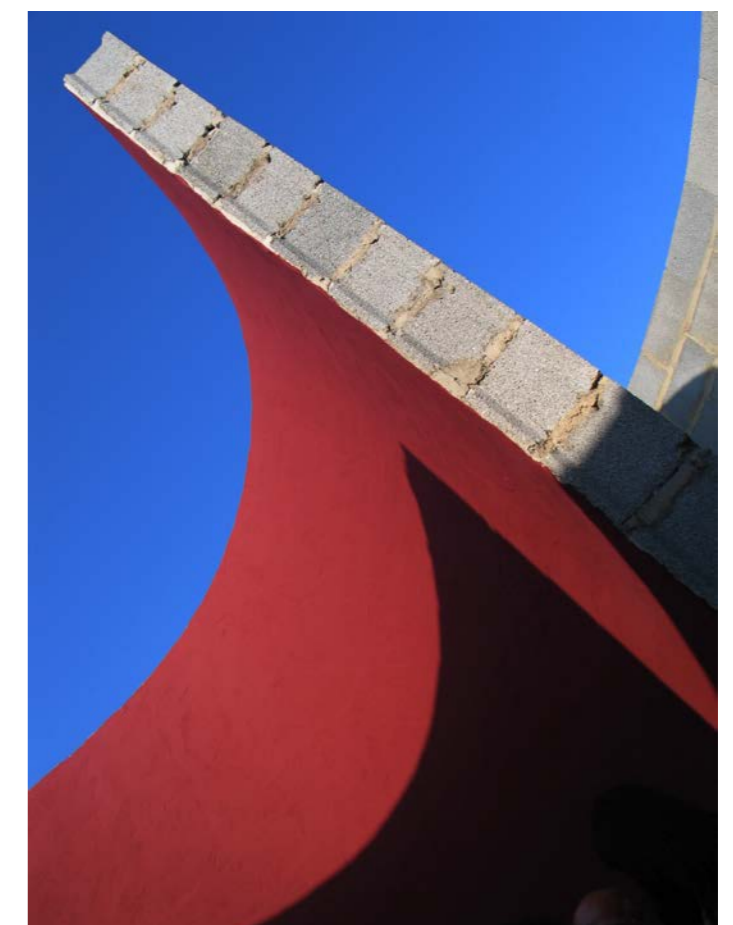
bedroom with hidden wardrobe



west side - entrance



sketches Pancho Guedes



place where the ocean is felt under the feet

A Voz do Mar (Voice of the Sea) is an intervention by architect Pancho Guedes. Temporary installation was build according to the sketches of Pancho around an existing crack in the cliff of the Sagres fortress. Pancho proposes labyrinth leading to this hole. The presence of rhythmic sound produced by tides of the ocean leads visitors to discover this natural acustic performance. In his speech, Pancho Guedes describes a place where the ocean is felt literally under the feet.

[A Voz do Mar installation 2010](#)
[Pancho Guedes, Ressano Garcia Arquitectos palnning, realization](#)



Nike Plus

NikeBox is winning proposal of the invited competition organized by Nike Czech Republic. Simple concept: The history of Nike company hidden in the shoe box, shows four selected milestones of the company history. Running trail passing four rooms represents the field where the first shoe was sold.

Nike Box
installation 2007
T.Dufkova, E.Maskova, M.Zahatňanský, P.Zamazal
palnning, realization

NikeBox in abandoned factory



Nike Vintage



Nike Air





structure was created by wooden slats nailed together

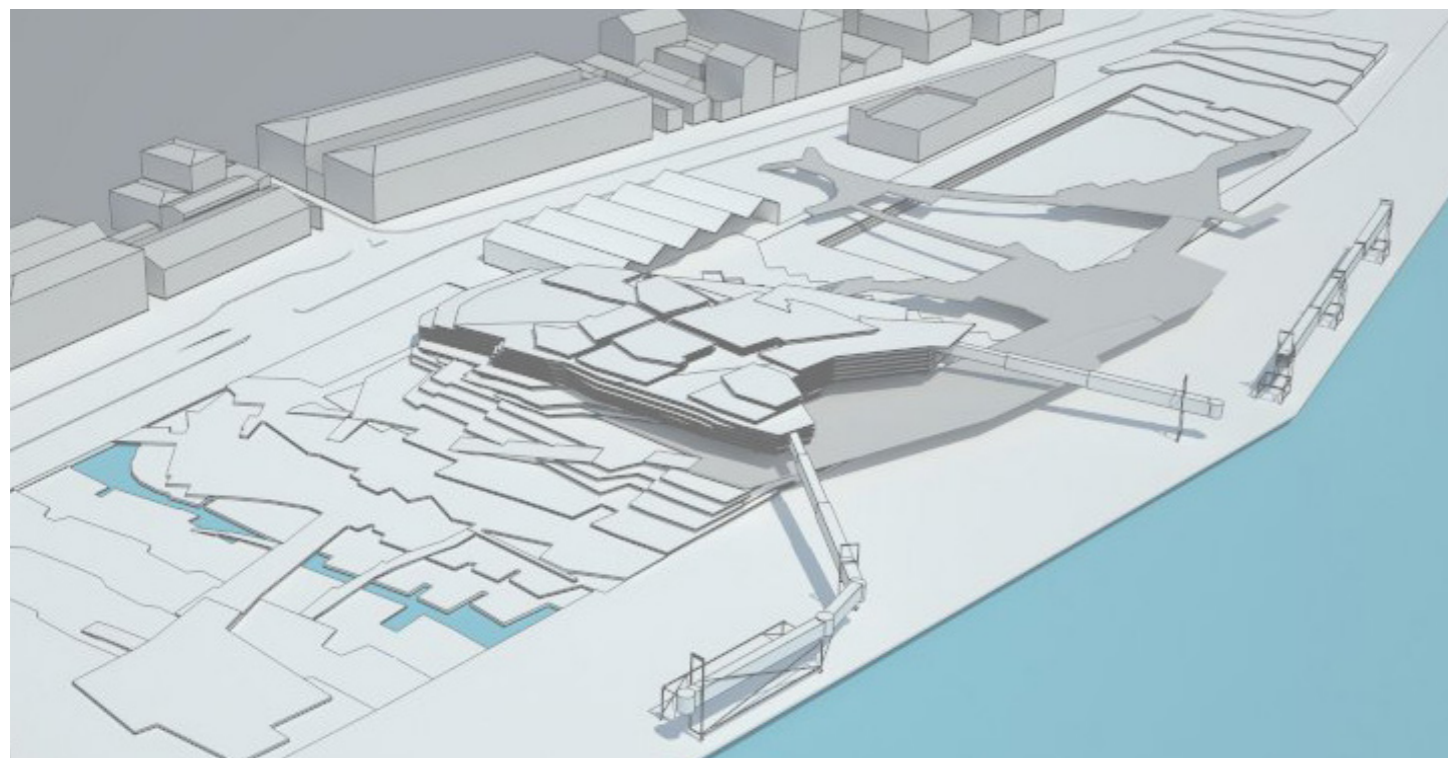


Time unfolds like a spiral, day by day. Genetic code in DNA is also arranged in spiral convolutions which hand us over results of the whole evolution. Showroom is designed as a light, transparent, wall, shaped into a spiral, made of wooden slats. This creates a continuous space structure which challenges for further exploration and the character of which directs and guides the visitors throughout its inside. It creates kind of a coating that wraps the displayed icons and offers them dignified space for admiration. Space, or the journey through the space, is fairly divided into 8 checkpoints, where each one is dedicated to presentation of different part of Nike Vintage collection.

Nike Spiral
showroom 2008
G.Szentpetery, M.Zahatňanský, P.Zamazal
planning, realization

COPETITIONS

public space



For the competition of the new Cruise Terminal in Lisbon, the project aims to enhance the genetic code of the waterfront. There are three core values: Al hamma (water springs), the landfill and the urban morphology. Lisbon has an unprecedented opportunity and the environmental needs provide an innovative solution.

The project focuses on the interaction between the territory and the social groups, drawing physical space from the social space. The different levels define places that encourage the permanence and are organized around the water in memory of the hot springs (al-hamma),

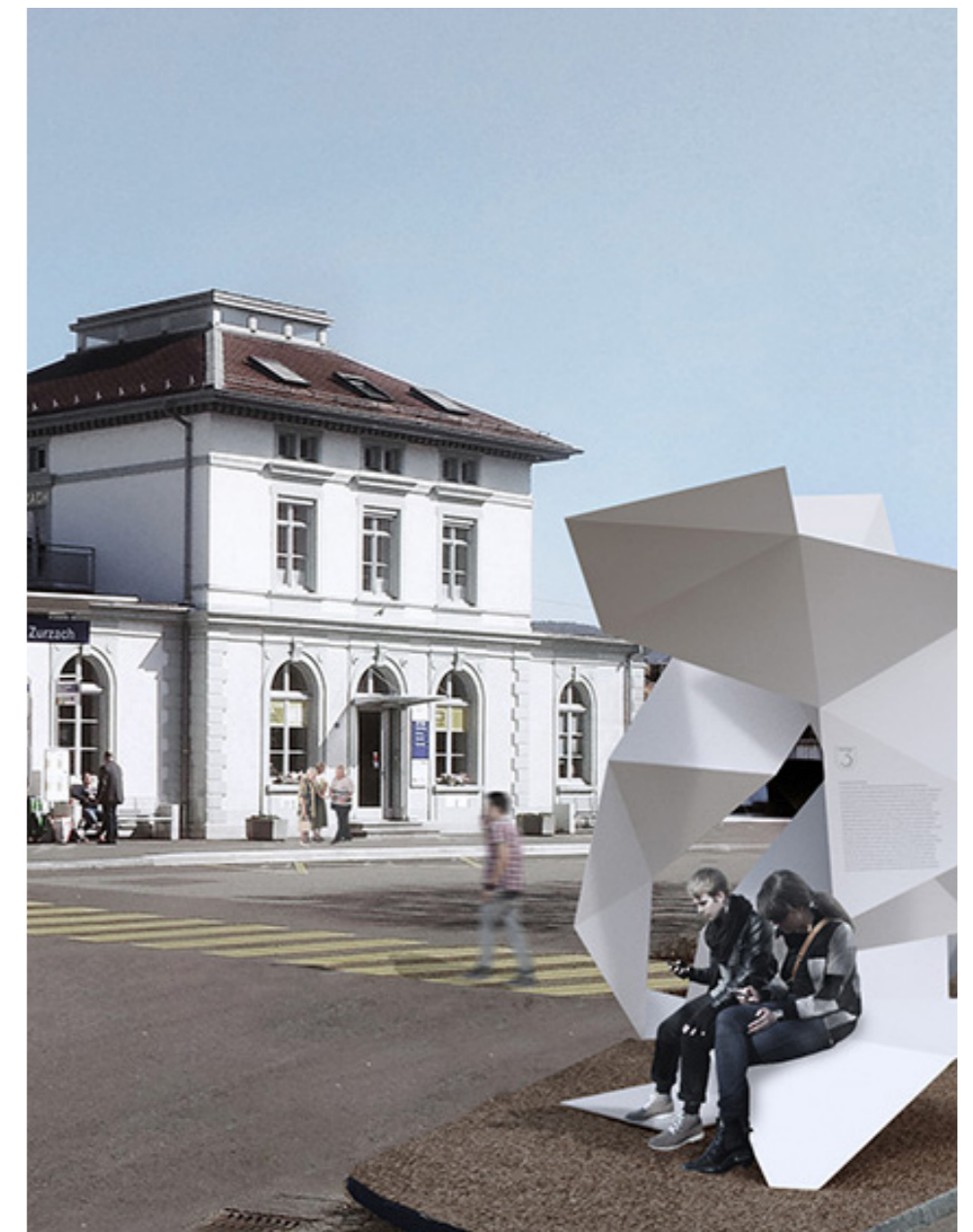
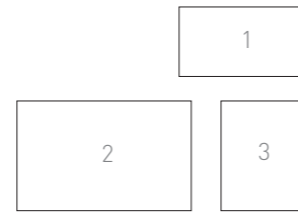
The pragmatic constructive system is iconic for the genetic code of the place to draw an unrepeatable draft, to establish relationships with the area's identity. The flat surface of the landfill port features or tries to make its identity and develops a proposal based on the reconfiguration of the topography to fit within the building and regenerate public space.

Lisbon Cruise Terminal
competition 2010
Ressano Garcia Arquitectos
visualizations, technical drawing

1.
Big Machine
competition 2012
M.Hudák, M.Zahatňanský
intervention in Prague urban sprawl / CZ

2.
Underpass
competition 2011
M.Hudák, M.Zahatňanský
urban intervantion in Košice / SK

3.
Ortseingange Bad Zurzach
competition 2015, 1. prize
M.Toth, J.Magala, M.Zahatňanský
entrances to Bad Zurzach / CH



Several huts made of shipping containers covered with processed cork would serve as touristic cabins. Different options of use are possible thanks to the folding ship-like parts. Cabins includes photovoltaic panel, solar panel, water tank, solar oven, eco-toilet and are designed to move between different spots of clients propriety allowing occupants to enjoy solitude surrounded with cork trees.

Eco-cabin Gafanhoto

study 2010

Ressano Garcia Arquitectos

visualizations, model making, palnning

